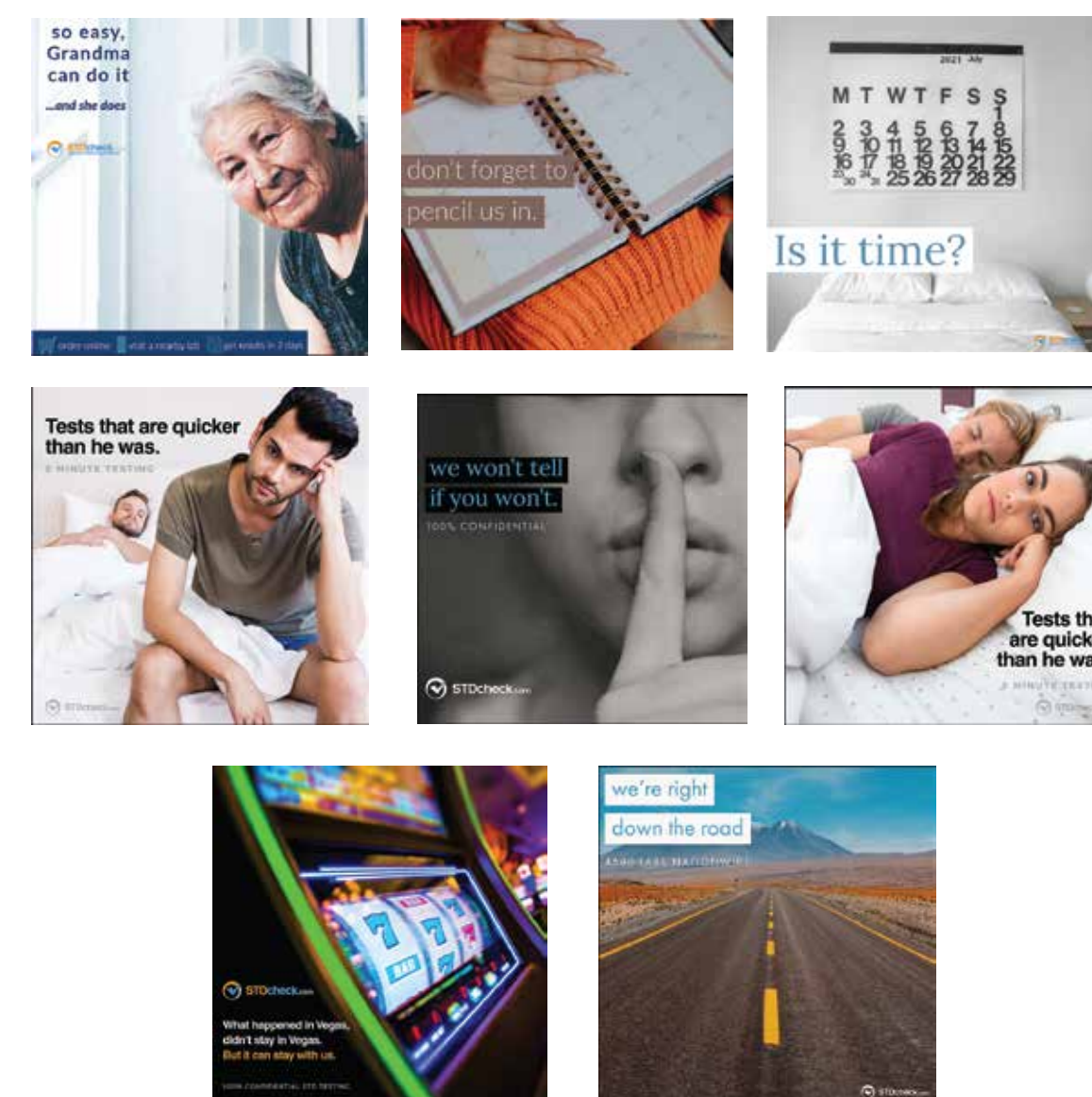
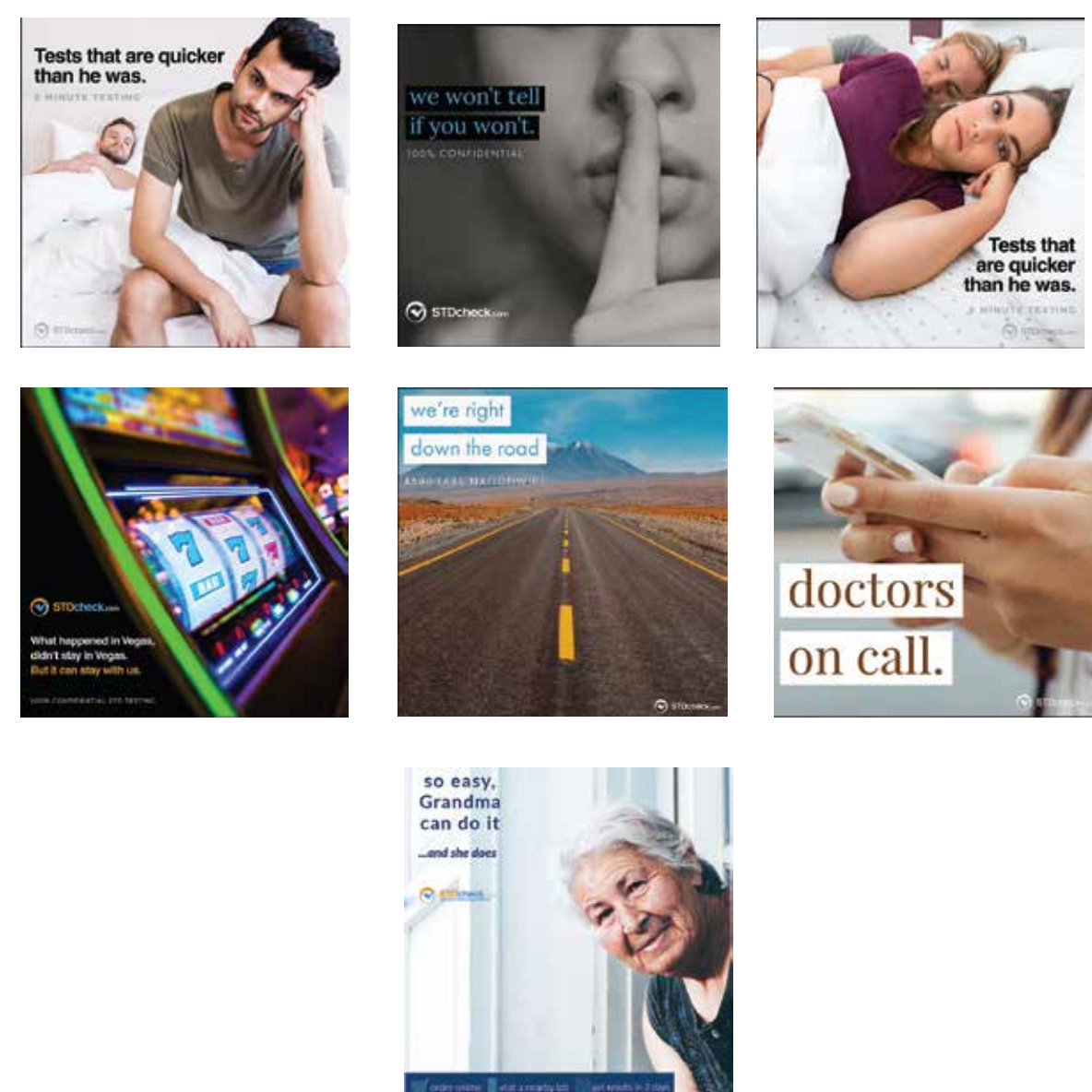
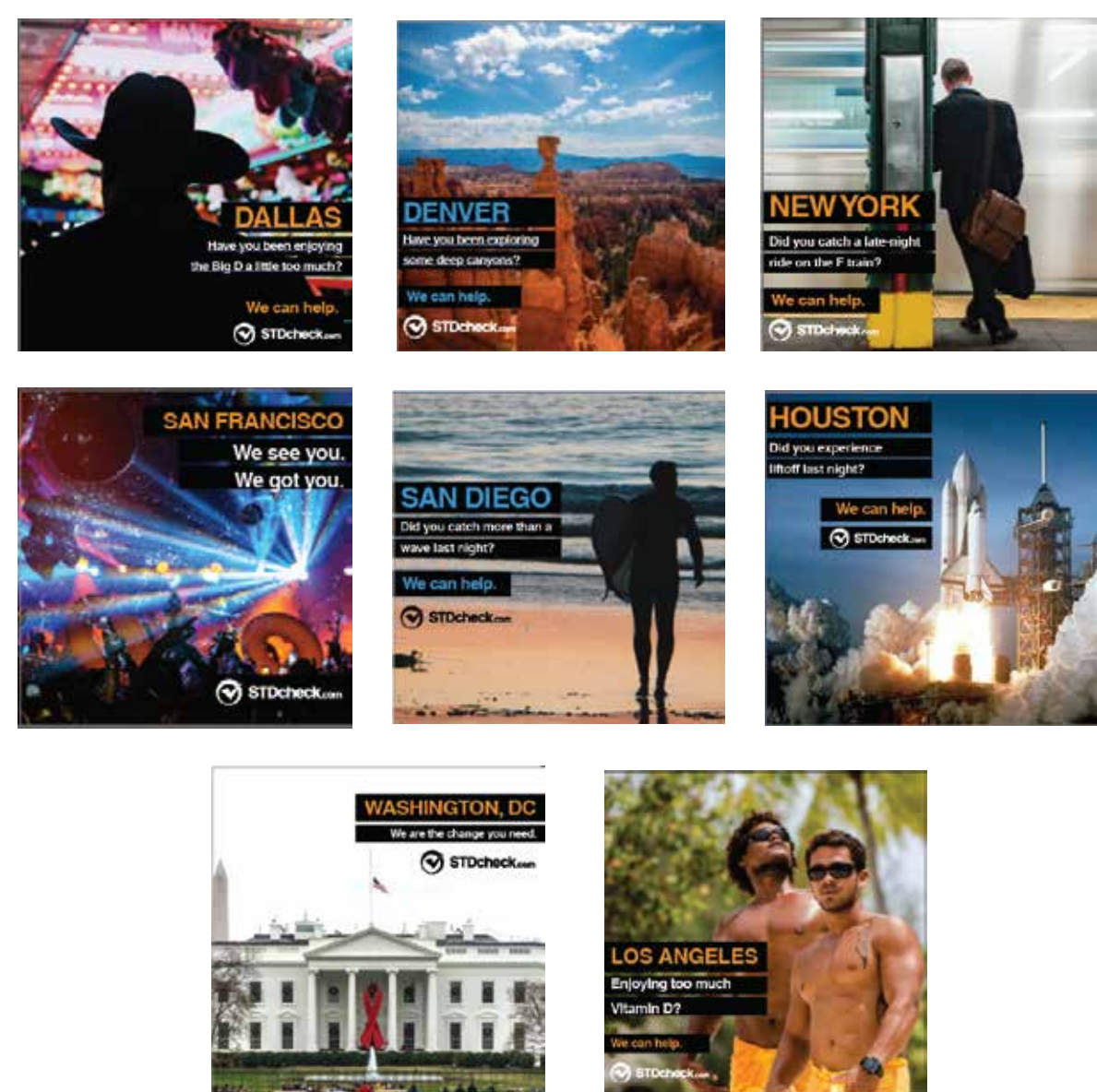


STDcheck.com Website Visitors Retargeting

All visitors based on Location-Targeting website visitors based on their location using location-specific jargon

Interested Visitors: Symptoms pages, Find a lab, FAQ, and How it works pages

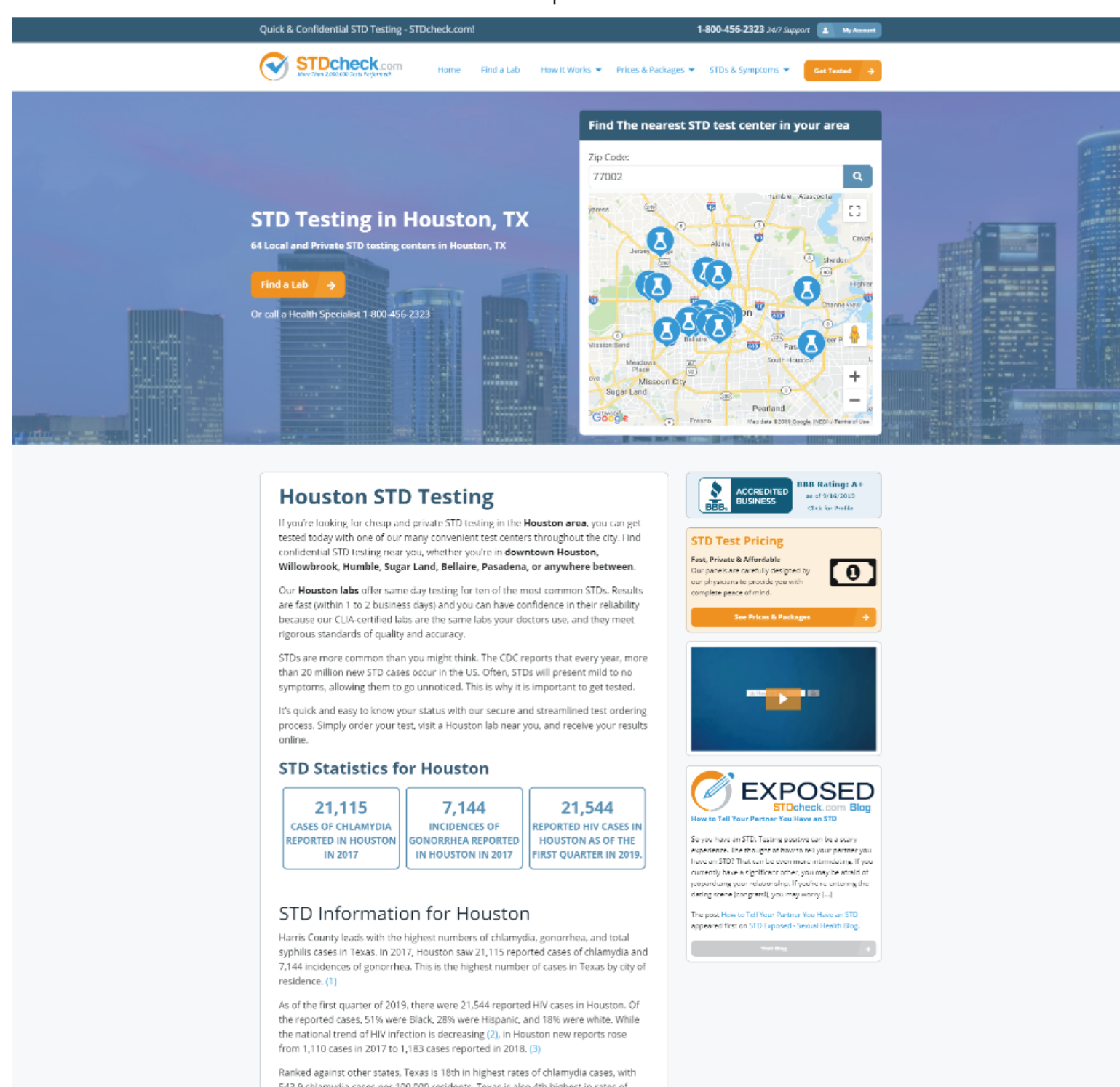
Email list and social media interactions - Retargeting converted



Landing Page: Leads to city-specific landing page displaying statistics about that city's STD rates
CTA: Find a Lab
CTA2: About us (FAQ)

Landing Page: Leads to landing page that expands on brand's values explaining how it works, HIPAA and reviews.
CTA: Find a Lab

Landing Page: Leads to landing page explaining recommended times to get retested with up-to-date STD rates.
CTA: Find a Lab



zipcode map

About Us Page

Who We Are
Lorem ipsum dolor sit amet, consectetur adipiscing elit, sed diam nonummy nibh euismod tincidunt ut laoreet dolore magna aliquam erat volutpat. Ut wisi enim ad minim veniam,

Why You can Trust Us
Lorem ipsum dolor sit amet, consectetur adipiscing elit, sed diam nonummy nibh euismod tincidunt ut laoreet dolore magna aliquam erat volutpat. Ut wisi enim ad minim veniam,

How it Works
Lorem ipsum dolor sit amet, consectetur adipiscing elit, sed diam nonummy nibh euismod tincidunt ut laoreet dolore magna aliquam erat volutpat. Ut wisi enim ad minim veniam,

Credentials/Credibility
Lorem ipsum dolor sit amet, consectetur adipiscing elit, sed diam nonummy nibh euismod tincidunt ut laoreet dolore magna aliquam erat volutpat. Ut wisi enim ad minim veniam,

Ready to get started?

find a lab

zipcode map

Is it Time to get retested?

What does the CDC say?
Lorem ipsum dolor sit amet, consectetur adipiscing elit, sed diam nonummy nibh euismod tincidunt ut laoreet dolore magna aliquam erat volutpat. Ut wisi enim ad minim veniam, quis nostrud exerci tation ullamcorper suscipit lobortis nisl ut aliquip ex ea commodo consequat. Duis autem vel eum iriure dolor in hendrerit in vulputate velit esse molestie consequat,

Should I get retested survey

find a lab

If users clicked on a CTA but don't convert, they became warmer audiences